



Project No.: 20101WDG0105-2
DATE: 2021-03-29

PHOTO DOCUMENT

Bureau Veritas Shenzhen Co., Ltd.
Dongguan Branch

No. 34, Chenwulu Section, Guantai Rd.,
Houjie Town, Dongguan City,
Guangdong 523942, China

Tel: +86 769 8998 2098
Fax: +86 769 8593 1080
Email: customerservice.dg@bureauveritas.com

Page 1 of 14

PHOTO DOCUMENT- V 1

**Enclosure front view
ME 5KTL-3PH to ME 20KTL-3PH**



**Enclosure side view-1
ME 5KTL-3PH to ME 20KTL-3PH**



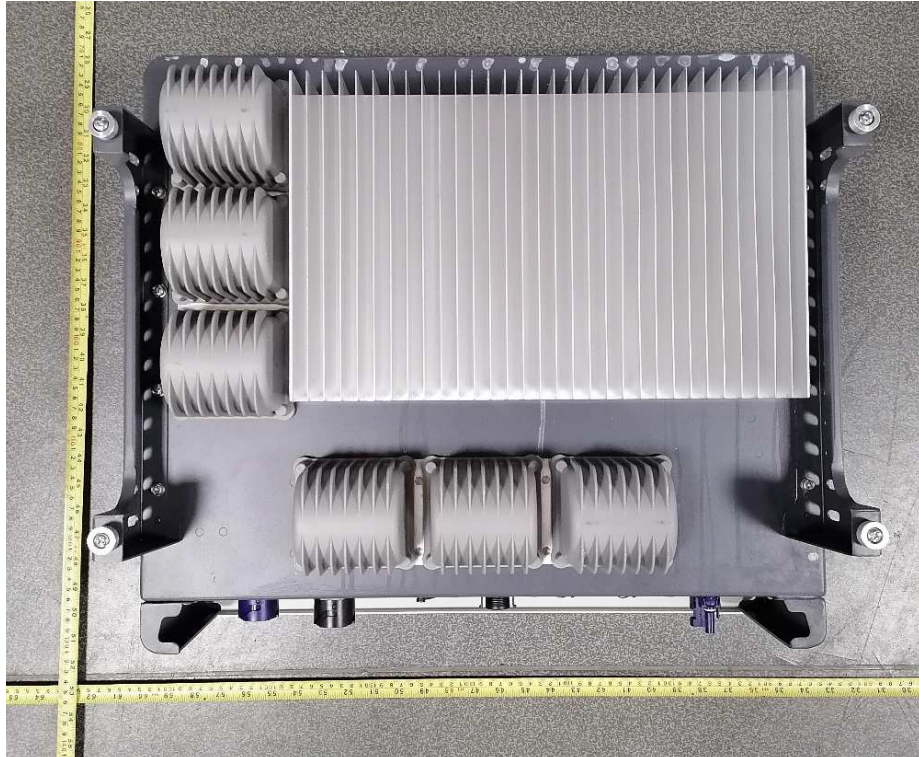
**Enclosure side view-2
ME 5KTL-3PH to ME 20KTL-3PH**



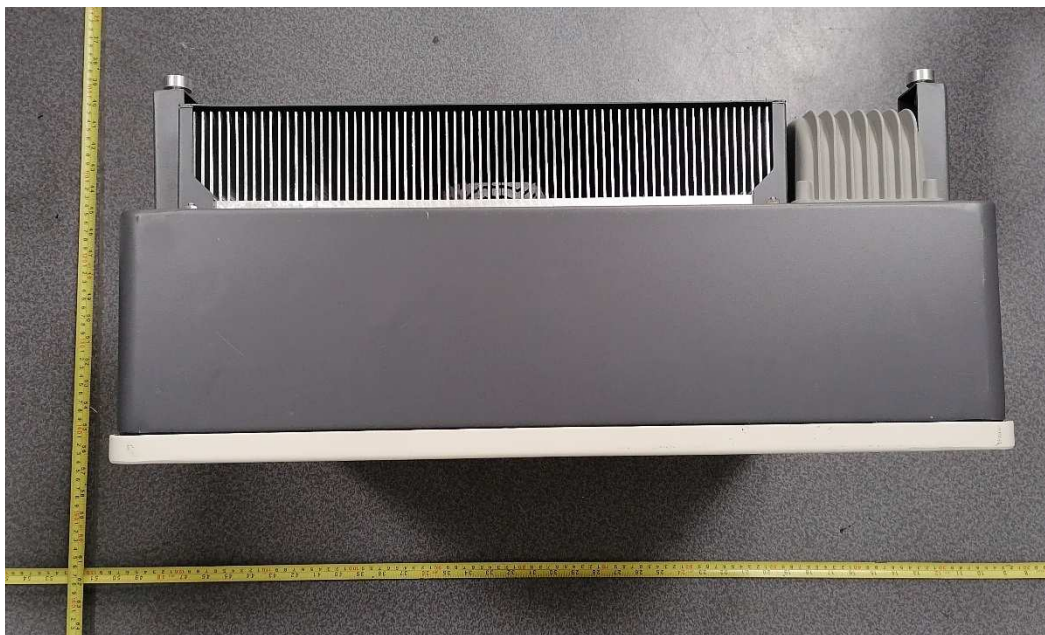
**Enclosure rear view
ME 10KTL-3PH to ME 20KTL-3PH**



**Enclosure rear view
ME 5KTL-3PH to ME 8KTL-3PH**



**Enclosure top view
ME 5KTL-3PH to ME 20KTL-3PH**



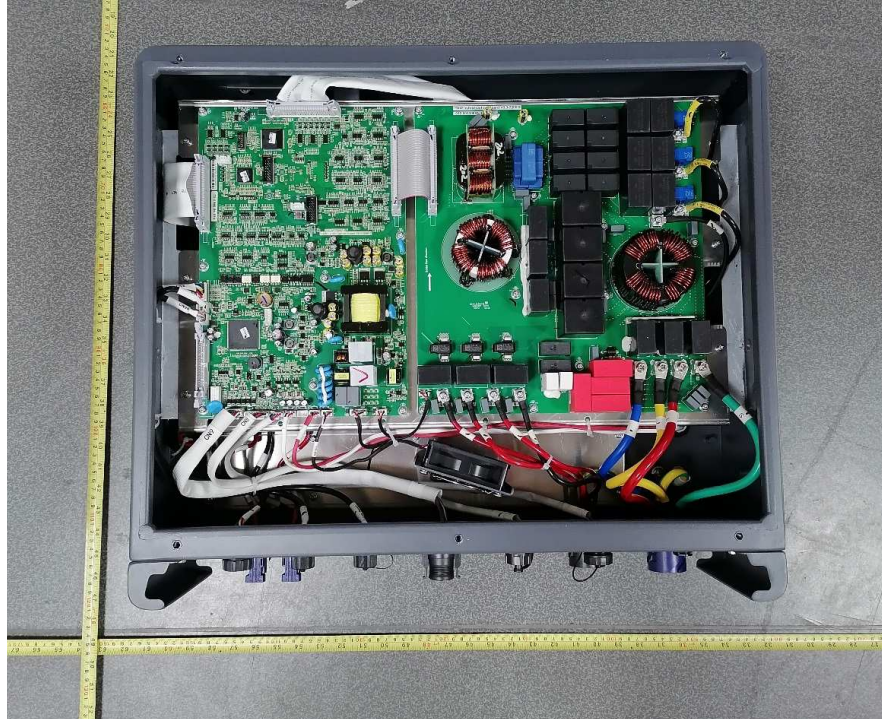
**Enclosure terminal view
ME 10KTL-3PH to ME 20KTL-3PH**



**Enclosure terminal view
ME 5KTL-3PH to ME 8KTL-3PH**



**Internal view -1
ME 10KTL-3PH to ME 20KTL-3PH**



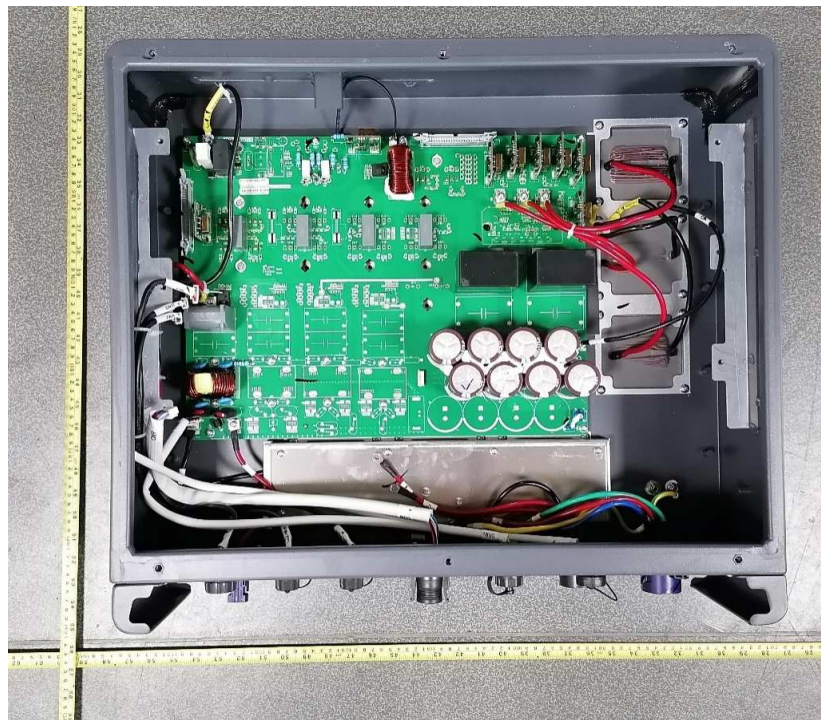
**Internal view -2
ME 5KTL-3PH to ME 8KTL-3PH**



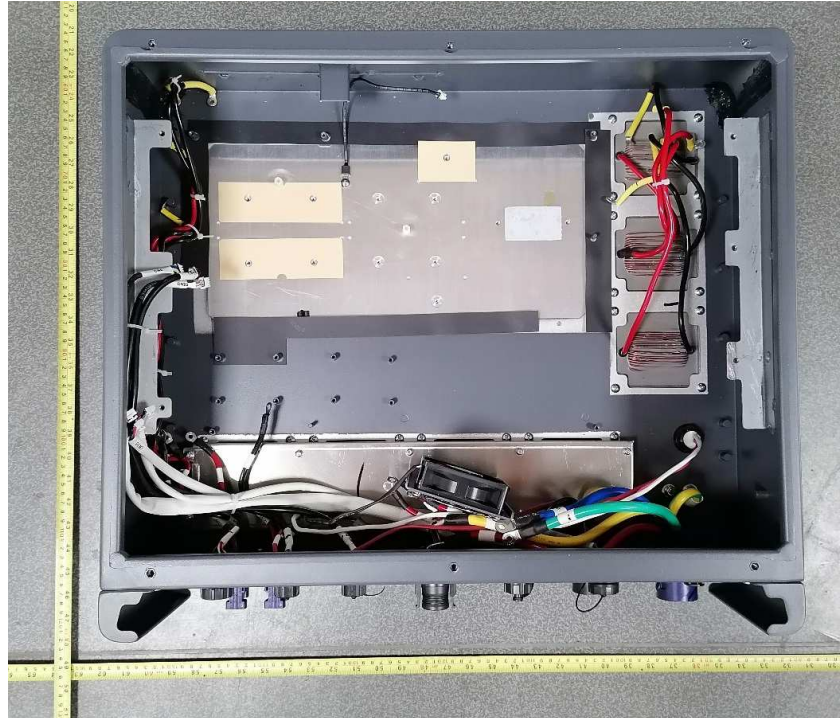
**Internal view -3
ME 10KTL-3PH to ME 20KTL-3PH**



**Internal view -4
ME 5KTL-3PH to ME 8KTL-3PH**



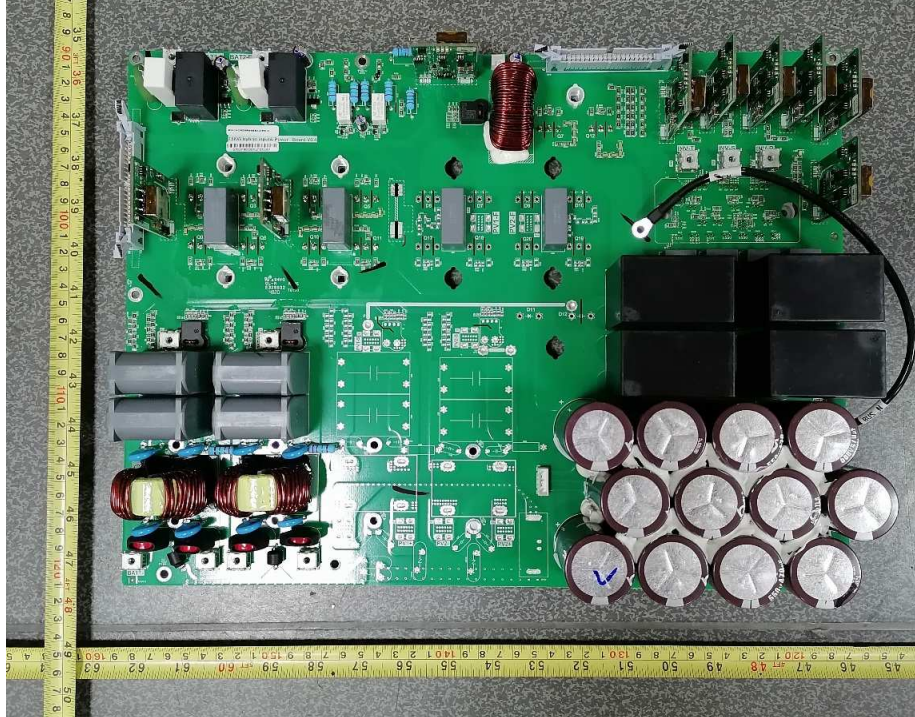
**Internal view -5
ME 10KTL-3PH to ME 20KTL-3PH**



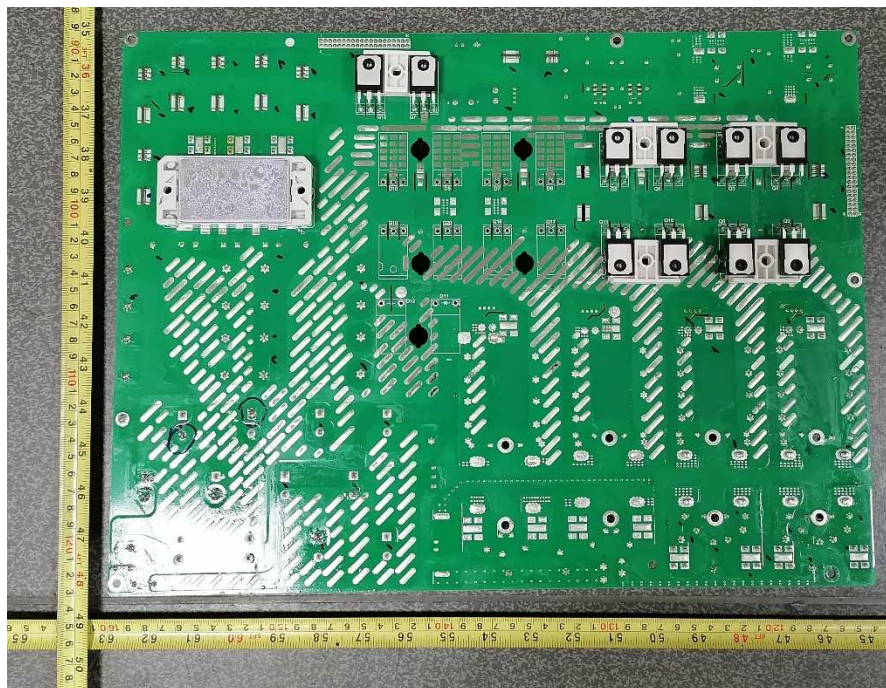
**Internal view -6
ME 5KTL-3PH to ME 8KTL-3PH**



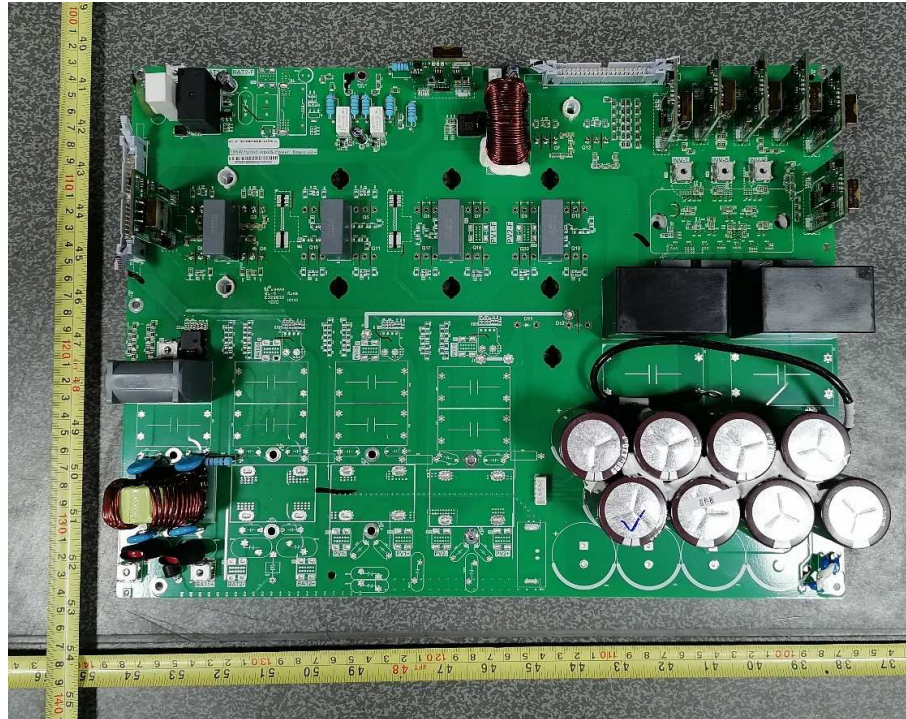
**Main power board - component side view
ME 10KTL-3PH to ME 20KTL-3PH**



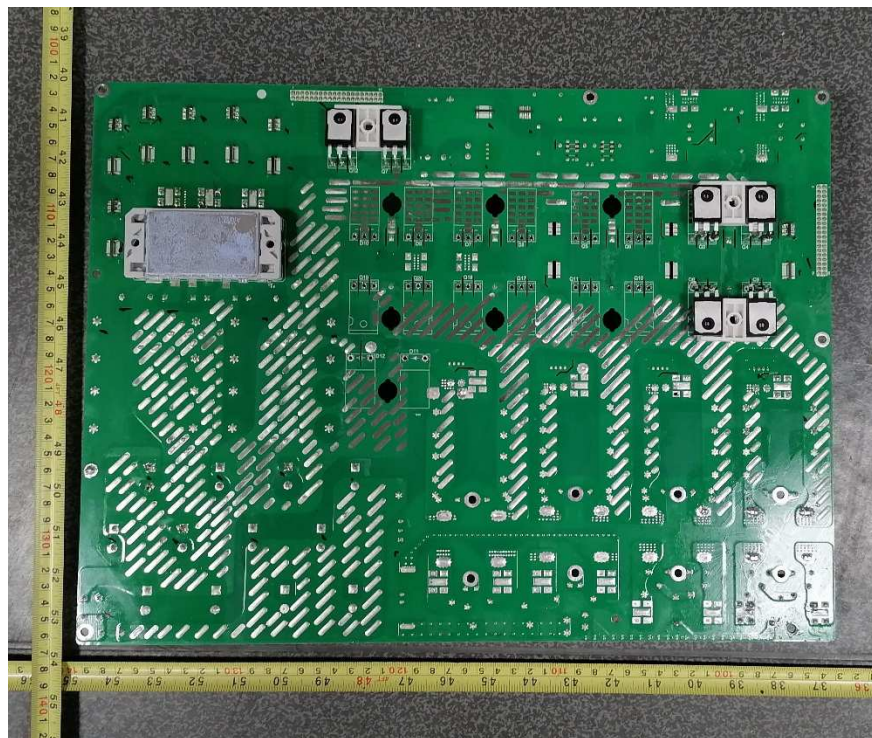
**Main power board - solder side view
ME 10KTL-3PH to ME 20KTL-3PH**



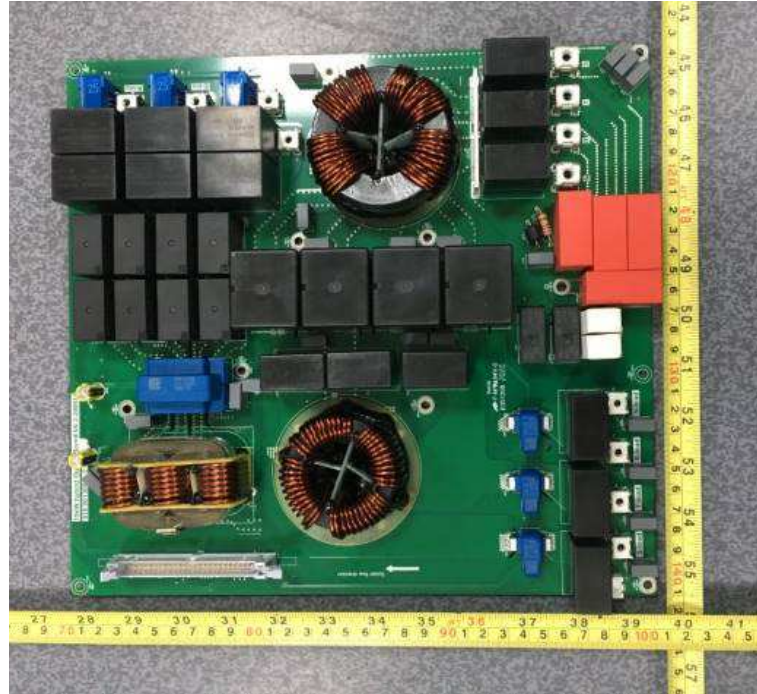
**Main power board - component side view
ME 5KTL-3PH to ME 8KTL-3PH**



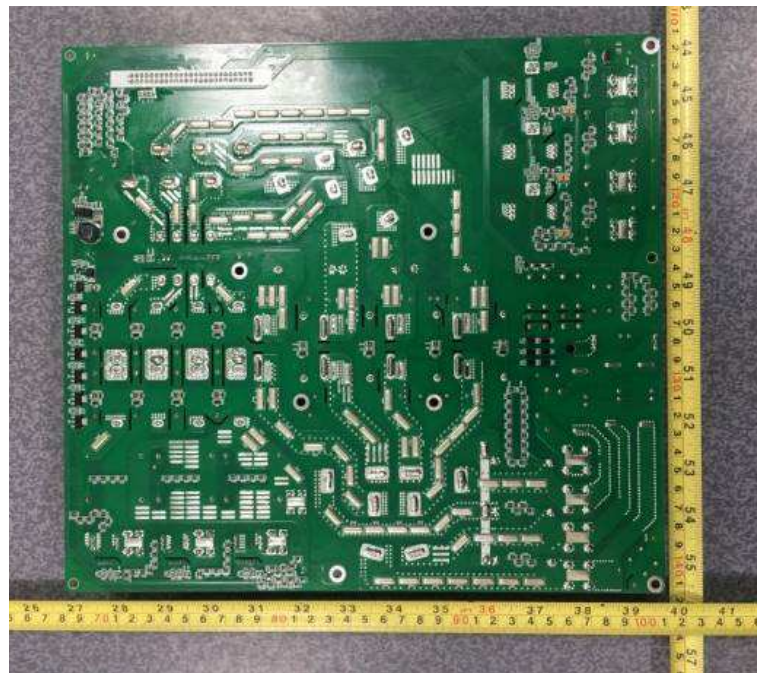
**Main power board - solder side view
ME 5KTL-3PH to ME 8KTL-3PH**



**Out put board - component side view
ME 5KTL-3PH to ME 20KTL-3PH**



**Out put board - solder side view
ME 5KTL-3PH to ME 20KTL-3PH**



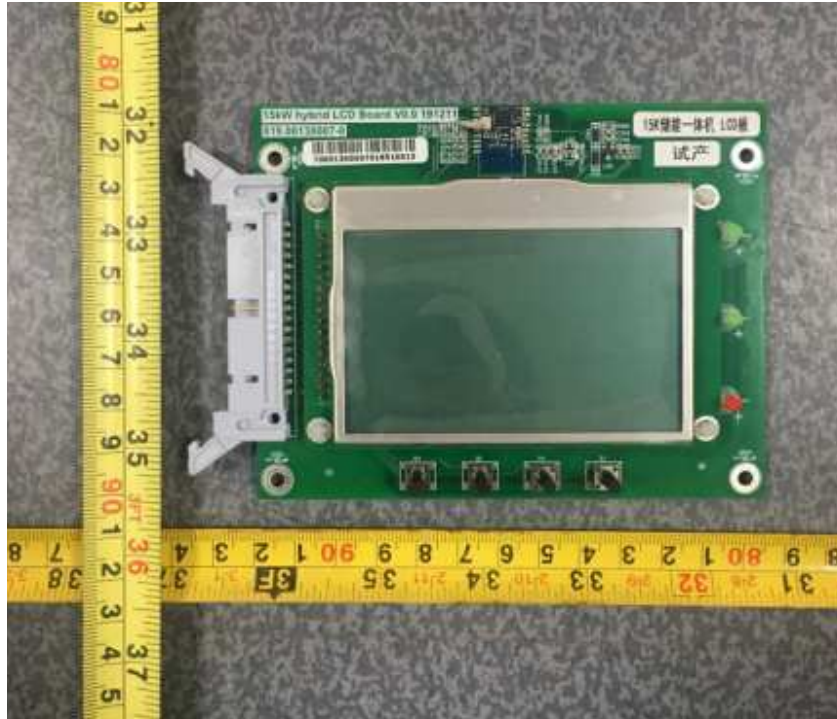
**Control board - component side view
ME 5KTL-3PH to ME 20KTL-3PH**



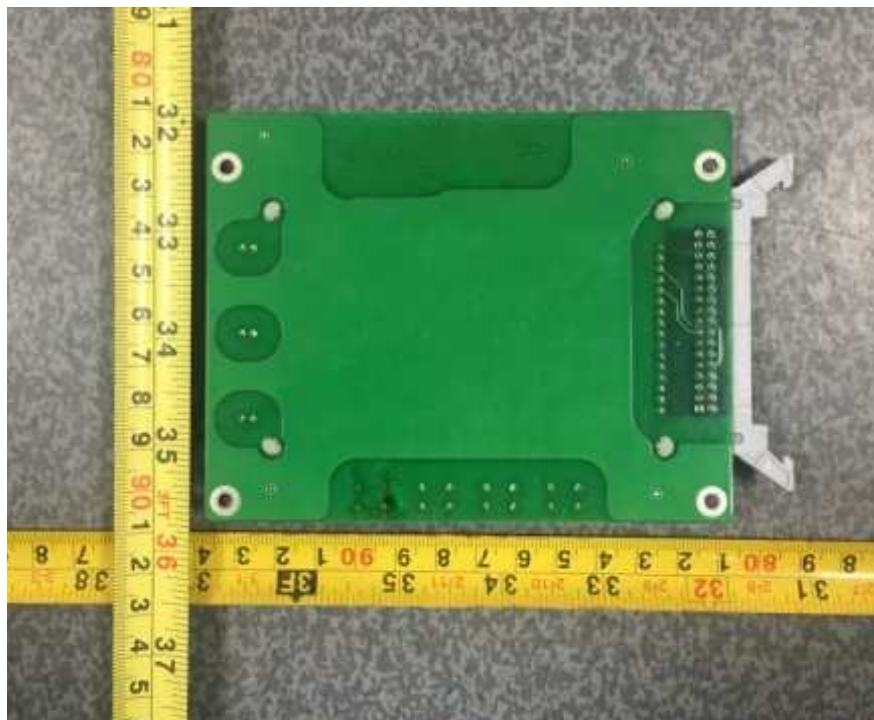
**Control board - solder side view
ME 5KTL-3PH to ME 20KTL-3PH**



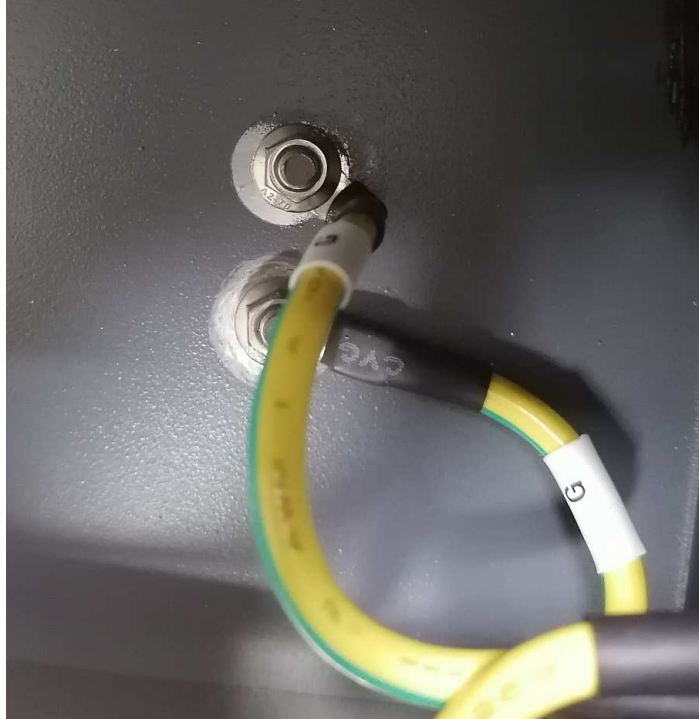
**Display board - component side view
ME 5KTL-3PH to ME 20KTL-3PH**



**Display board - solder side view
ME 5KTL-3PH to ME 20KTL-3PH**



**Grounding
ME 5KTL-3PH to ME 20KTL-3PH**



-----End of photo document-----